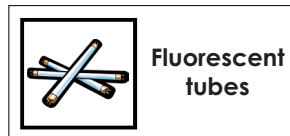
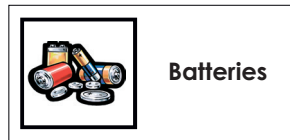


Waste fraction signs

Hazardous waste



such as TV:s,
Hi-fi and toys

such as acetone,
gasoline, lighter
fluid and paint
thinner

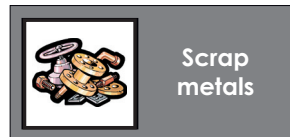
such as low energy
lamps and LED

such as motor oil,
hydraulic oil and
transmission oil

such as oily waste
in drums and oily
cottons and rags

such as aerosol
cans

Non hazardous waste



such as bottles and
foils

such as newspapers,
brochures, flyers and
catalogues

such as milk- and
juice cartons

such as jars and
bottles

such as jars and
bottles

such as cans, tins,
buckets, tubes and
lids

such as leftovers from
kitchens, cafeterias
and restaurants

such as oil leftovers
from cooking

waste not found in
any of the categories
above and not being
bulky or hazardous
waste